

PATROL® for PeopleSoft

PeopleSoft 8 certified software integration.

Detects and helps correct performance problems.

Proactive management of the PeopleSoft environment.

BMC Software, Inc. is a leader in enterprise management. The company focuses on Assuring Business Availability® for its customers by helping them proactively improve service, reduce costs and increase value to their business. BMC Software solutions span enterprise systems, applications and databases. The Enterprise Applications Management solutions help optimize business services and enhance the end-user experience by managing the entire business transaction path. BMC Software Solutions improve performance and availability, reduce the total cost of PeopleSoft Applications ownership, and achieve a faster Return on Investment.

Integration Overview

PATROL for PeopleSoft Applications V1.7.00 offers a comprehensive solution to optimize resource utilization and proactively manage the PeopleSoft environment. Focusing on the end user experience, PATROL for PeopleSoft Applications manages and helps improve service levels, enabling an 'Always-On' (24/7 availability) business process.

With PATROL for PeopleSoft Applications customers can:

- Manage the PeopleSoft environment from a centralized location.

- Detect, correct and prevent availability and performance problems within the PeopleSoft environment.
- Improve service levels and analyze system performance and trends for informed strategic decisions.

PATROL for PeopleSoft

PATROL for PeopleSoft Applications provides an automated, centralized end-to-end management and monitoring solution that notifies administrators of problems before they affect the users. It also provides a storehouse of system knowledge that administrators can easily access, without needing further technical expertise.

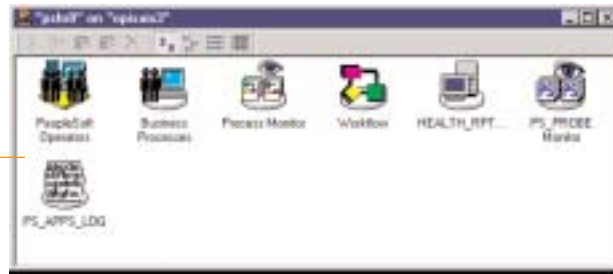
PATROL for PeopleSoft applications is based on the state-of-the-art PATROL infrastructure, reducing overall deployment time and utilizing the organization's established IT management knowledge and methodology.

Flexible Deployment

With its easy installation, configuration, and cross-platform support, PATROL for PeopleSoft Applications offers out-of-the box functionality and requires minimal customization. It allows PeopleSoft administrators to manage the entire scope of their PeopleSoft environment including PeopleSoft applications, Tuxedo, databases, and the related operating system, from the end-user's perspective, providing an in-depth view into PeopleSoft domains, processes, and infrastructure.

PATROL® for PeopleSoft

A centralized view of your PeopleSoft environment.



System Availability

The 24/7 business process relies on the availability of the system components like the Web server or the database. PATROL for PeopleSoft Applications monitors the health of PeopleSoft critical components, offering early problem detection and notification, along with problem analysis tools for faster problem resolution.

Automated Recovery

In order to get your system up again and not jeopardize business process availability, upon detecting that a critical component is down, PATROL for PeopleSoft Applications alerts the PeopleSoft administrator and provides the choice of automatic or manual recovery options.

Meeting Service Levels

To meet service level agreements and optimize productivity, PATROL for PeopleSoft Applications monitors and measures end-to-end response time from any configured Web browser in a multi-tier Internet environment.

Availability

PATROL for PeopleSoft Applications V1.7.00 is available from BMC Software. For more information, please call 800 793 4262 or visit the Web at www.bmc.com

Support

PATROL for PeopleSoft Applications V1.7.00 is fully supported by BMC Software's worldwide network of professional services and support centers. For further support, please contact 800 537 1813 or visit www.bmc.com/support.html

Certification Environment

Hardware: Ultra SPARC III

Software: PeopleTools 8.1.7, PeopleSoft HRMS 8.3, PATROL for PeopleSoft Applications 1.7.00

Database Platform: Oracle 8.1.7

Operating System: Solaris 8

PeopleSoft Certified Software Integrations

When PeopleSoft conducts certification testing, we verify only that the software integration functions according to the partner's test plan, and that it makes appropriate use of PeopleSoft components and integration technologies in the environment specified in the published Certification Datasheet. Certification applies only to the components providing integration between the partner's software and PeopleSoft software; it does not apply to or extend to the partner's software product(s). Certification is performed in a lab environment using uncustomized versions of PeopleSoft and the partner's software. Certification testing is product version specific, hardware specific, database specific, and operating system specific, and is conducted in English, unless explicitly noted otherwise.

Similar results may not be able to be duplicated in a production environment, including where the PeopleSoft or partner software is modified or customized upon implementation. Customers are solely responsible for the selection of all third-party software, including any integration software, used in conjunction with PeopleSoft software and for the results of such use. For the functional and environmental details on a certified integration, refer to the partner's Certification Datasheet, found in the Alliances section of the PeopleSoft Web site at www.peoplesoft.com.

PeopleSoft.



PeopleSoft, Inc.
Corporate Headquarters
4460 Hacienda Drive
Pleasanton, California 94588 USA
Toll-free 1 888 773 8277
Tel 925 694 3000
www.peoplesoft.com

BMC Software
2101 City West Boulevard
Houston, Texas 77042 USA
Tel 713 918 8800
www.bmc.com

PeopleSoft, PeopleTools, PS/nVision, PeopleCode, PeopleBooks, *PeopleTalk*, and Vantive are registered trademarks, and Pure Internet Architecture, Intelligent Context Manager, and The Real-Time Enterprise are trademarks of PeopleSoft, Inc. All other company and product names may be trademarks of their respective owners. The information contained herein is subject to change without notice.
Copyright © 2003 PeopleSoft, Inc. All rights reserved.